

# Wrocław University of Science and Technology



## Exchange Programs

<https://dwm.pwr.edu.pl/en/international-students>



# Wrocław is the Meeting Place

## The greatest assets of Wrocław?

- **People:** Approx. 1 million residents in the greater Wrocław area
- **Location:** in the heart of Europe and in southwestern Poland, Wrocław is easily accessible to many other major cities.
- **Knowledge:** Wrocław is one of the major academic centres in Poland.
- **Quality of life:** Wrocław is a modern, open and dynamic city with rich history and culture. You'll fall in love with Wrocław!



# WUST in numbers



Third place among technical universities, sixth place in the general ranking, and first place in the Lower Silesia in the ranking of universities conducted in 2020 by the Perspektywy Foundation

- 21 233 students,
- 436 doctoral students and 311 students of the Doctoral School,
- 13 Faculties, 3 regional branches in Jelenia Góra, Legnica and Wałbrzych,
- over 4 000 employees, including about 2 150 research and teaching staff,
- 126 buildings with modern laboratories, libraries, Internet access, multimedia-fitted lecture rooms, 17 121 publications in journals on the ISI Master Journal List,
- 7 languages taught in the Foreign Languages Department (English, French, Spanish, Japanese, German, Russian, Polish for foreigners)
- 175 student science groups,
- 22 student organizations,
- 18 student culture agencies.



# Faculties at WUST

Nominations are made on the basis of **Student's Exchange Agreements** which are signed by both parties within Faculties:



FACULTY OF ARCHITECTURE



FACULTY OF CIVIL ENGINEERING



FACULTY OF CHEMISTRY



FACULTY OF INFORMATION AND COMMUNICATION TECHNOLOGY



FACULTY OF ELECTRICAL ENGINEERING



FACULTY OF GEOENGINEERING, MINING AND GEOLOGY



FACULTY OF ENVIRONMENTAL ENGINEERING



FACULTY OF MANAGEMENT



FACULTY OF MECHANICAL AND POWER ENGINEERING



FACULTY OF MECHANICAL ENGINEERING



FACULTY OF FUNDAMENTAL PROBLEMS OF TECHNOLOGY



FACULTY OF MICROSYSTEM, ELECTRONICS AND PHOTONICS



FACULTY OF PURE AND APPLIED MATHEMATICS

# Application Procedure

## Deadlines for nominations:

- 1 May for winter semester and the whole academic year
- 1 November for summer semester

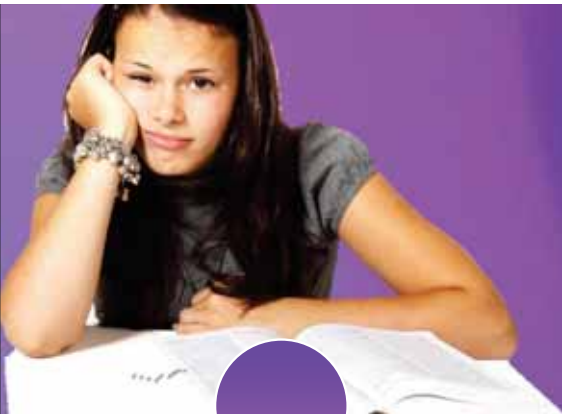
## Deadlines for submitting documents:

- 15 May for winter semester and the whole academic year
- 15 November for summer semester

## NOMINATIONS via IRC on-line platform

- Basic student's data is filled by the sending University via IRC
- Information about application procedure is sent automatically to the nominated student
- The student uploads the application documents to the system.





# Documents required for Exchange programme:

## Application Form

fill in your personal data and all information required at your IRC account, then download application form from the IRC system (the data will be already there), print it out, sign it and upload it again in the system.

## Learning Agreement

you need to include courses you would like to take at WUST in the LA

### Additional courses:

- **Polish History and Culture** (1 ECTS)
- **Polish Language** (2 ECTS)
- **Foreign Language** :

Level B2+, C1+ - 1 ECTS

Levels A1, A2, B1.1, B2.1, C1.1, C2.1 – 2 ECTS

Level B1.2, B2.2, C1.2 – 3 ECTS

- **Physical Education** (0 ECTS)

## Transcript of Records

the list of courses taken both with grades and ECTS gained, issued and signed by your home university.

### Link to courses ----->

[dwm.pwr.edu.pl/en/international-students/exchange-erasmus/incoming/erasmus-plus/courses-in-english](http://dwm.pwr.edu.pl/en/international-students/exchange-erasmus/incoming/erasmus-plus/courses-in-english)

Copy of an **ID card** (for EU students) or a **passport** (for non-EU students)

**Certificate of English** knowledge at the level of at least B2 (it is to be verified by your university).

Copy of **health insurance** (e.g. European Health Insurance Card).

## After Your Arrival

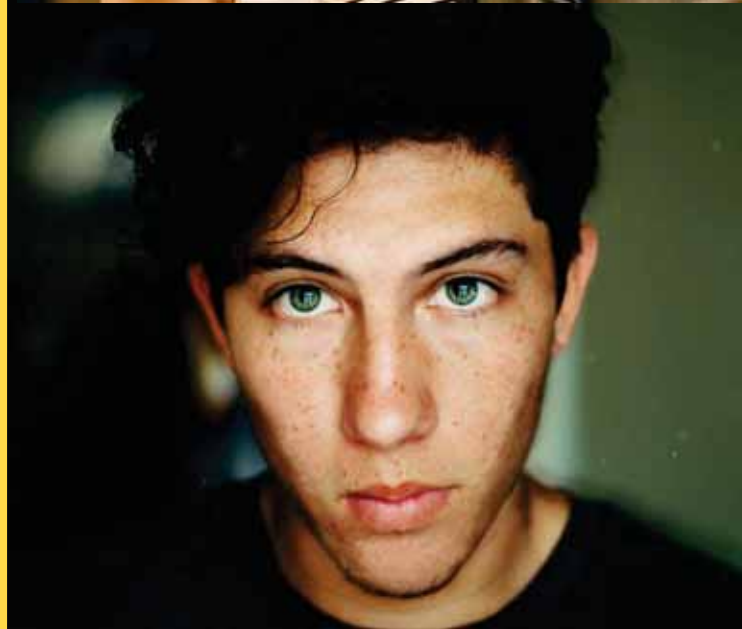
**Introduction Day** (we organise Orientation Week for incoming students, information about study, faculties, IT student's card etc.

**Confirmation of Arrival** (we will sign your document confirming your arrival to Wrocław)



## How to get and pay for ID student's card?

Fee of 22PLN is required ID card entitles to a 50% discount on public transport in the city (regardless of age) and a 37% discount on national railways (only when they are under 26).



The card also entitles the student to access the university library, sports centres and other facilities, and to discounted tickets to cinemas, theatres and museums



## During the mobility

- Residence in Wrocław
- Prolongation of stay (*only to extend for summer semester\**)
- Changes to LA



### Changes to LA

In case there is a need to introduce changes to the original mobility programme, student should complete "during the mobility" part of Learning Agreement

Changes to the Learning Agreement should be filled in (signed by a student, departmental coordinator at WUST, then delivered to the International Office.

The deadline is 2 weeks after the semester

### Residence permit

*(Temporary Residence Card)*

If you decide to prolong stay and your visa is about to finish, you can apply for TRC card in Governor's Office. We will assist you in this matter





### **Documents to remember!!!**

Before you leave we will ask you to fulfill some paperwork such as signed your Confirmation of Stay and collect your Transcript of Records. Also, if you leaved in dorm you need to complete departure card.

## **Before your Departure**

- Confirmation of Stay
- Transcript of Records from WUST
- Dormitory, Library and Dean's Office





#WUST  
international



Wrocław  
University  
of Science  
and Technology

## WEBSITES

#WroclawTech [pwr.edu.pl](http://pwr.edu.pl)

IRO [dwm.pwr.edu.pl](http://dwm.pwr.edu.pl)

## SOCIAL MEDIA

IG @wustinternational

FB @WroclawUniversityOfTechnology

## CONTACT INFO

Barbara Jarosz

Erasmus+/Exchange Programme

Consultant

Ph+48 71 320 45 68

e-mail: [barbara.jarosz@pwr.edu.pl](mailto:barbara.jarosz@pwr.edu.pl)





**#DREAMS  
COME  
TRUE  
AT**



**THANK  
YOU!**

International  
Relations Office

**WROCŁAW UNIVERSITY OF SCIENCE AND TECHNOLOGY**