

International Students Admission FAQ

2024/7 version



Common Problems Teachers May Encounter When Recruiting International Students



FAQ about International Students



When to apply NCHU?



01



05



On-campus taking care of international students

How to nominate outstanding international students?
(NCHU Faculty only)



02



06

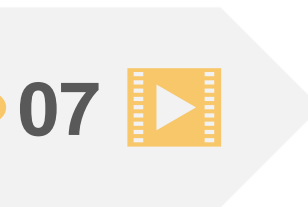


How to elevate international students' Chinese ability?

Students from designated countries



03



07



Outbound scholarship for PhD students

Scholarships



04



08



Can international students do part-time jobs or work in Taiwan after graduating?

1. Application Schedule

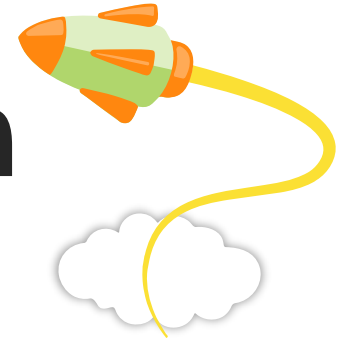


Application Procedure



Application Procedure

2. Nomination Application



- When you meet outstanding students, yet the application is not yet available

Nomination Timing

- Must be nominated by (at least) a full-time assistant prof. of NCHU, please go to the [“application system”](#)

Nomination Procedure

- Fall Semester : 11/1 ~ 1/31
- Spring Semester : 7/1 ~ 9/10

Nomination Period

Pre-approval Items

- Pre-approval qualification
- Scholarship (Full tuition waiver for the 1st academic year)
- Financial support from the referee

Once Approved

- OIA informs nominees
- Nominees submit documents online
- Get the admission officially



Nomination Application

3. Students from Designated Countries



Designated Countries

Include: Afghanistan, Algeria, Bangladesh, Bhutan, Cameroon, Gambia, Ghana, India (Identity Certificate), Iraq, Nepal, Niger, Nigeria, Pakistan, Senegal, Somalia, Sri Lanka, Syrian

Check for the latest info:



Guarantor's Responsibility

The guarantor (teacher) is required to sign the letter of guarantee. For the obligation, please check the QR code below.

Letter of Guarantee



OIA

OIA will help students to apply for visa. However, since the application and evaluation may take up to 3 to 6 months, please wait patiently.



If you have any questions, please feel free to contact OIA.

Oia can help

4. Scholarships



Government Scholarships

- MOE: For outstanding international students
- MOFA: For outstanding diplomatic allies students
- NSTC: For outstanding international students

≈US\$670~1,100/m
(tuition fee not included)



University Scholarships

- NCHU scholarship-Tuition waiver ≈ US\$1,520~1,800 / per semester
- NCHU scholarship-Monthly stipend *BA/MA ≈ US\$200/m PhD ≈ 265/m
- NCHU Elite (For university lecturers or prof.) ≈US\$830/m
- **NCHU Dual Degree Scholarship: tuition waiver + monthly stipend**
- TA-ship scholarship ≈US\$170/m



Project Scholarships

- MOE Elite (For university lecturers or prof.) ≈US\$830/m
- TIGP (For selected departments) ≈US\$1,130/m
- ICDF (For the international program of agriculture) ≈US\$600/m



NTD: USD=1:30

5. On-site Taking Care of International Students



New degree students would receive a package and a student handbook before their arrival, for them to be familiar with issues after coming to Taiwan.



OIA assists SSI, FSI and NHI, and provides work permit info for students to apply.



Match Taiwanese and foreign students on campus, and the Taiwanese student companions will lead foreign students to experience Taiwanese culture and adapt to life.



OIA regularly organizes activities for foreign students to help foreign students understand and experience Taiwanese culture.



If faces emergencies during their study, students may apply for emergency relief funds. The affected student or their advisor should fill out the application form. The fund is up to NT \$30,000 and may be released once per incident.



The Office of Student Safety has dedicated staff on call 24/7/365 to assist students experiencing an emergency: 04-22870885



If having difficulty adjusting to life here, emotional distress, or interpersonal relationship issues, students may apply for counseling online, and OSA can arrange English counseling as well.



If encounters sexual harassment on campus, may file a complaint with the University or request legal consultation and counseling.

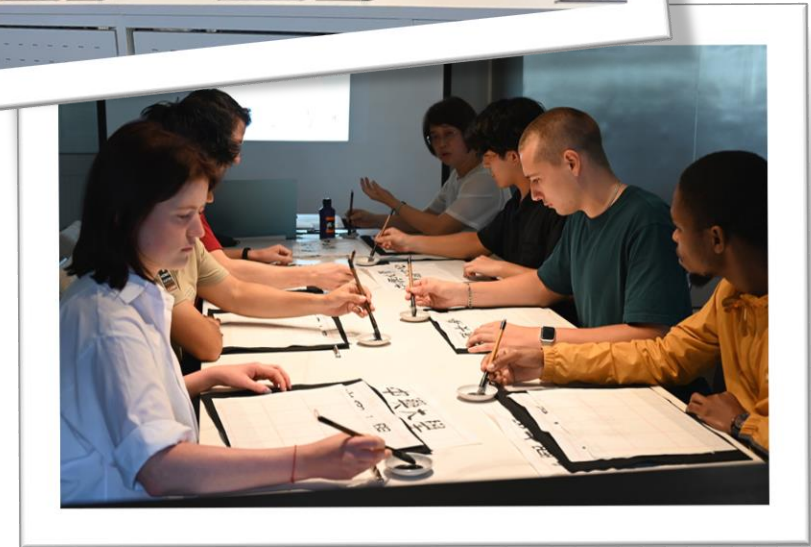
6. Chinese Learning

Credit Course- Practical Chinese

- Available for degree students and exchange students
- 3 hours per week (3 credits), divided into 4 levels

Non-credit Course

- The Chinese Language Center offers intensive paid-classes, not only about learning Chinese, but also cultural activities
- Short-term theme-based courses (online / in person) according to different needs are available



Chinese Learning

7. Doctoral Outbound Scholarship

Qualification

1. Doctoral students enroll for at least 1 year.
2. Approval from overseas academic or research institutions is required.

Documents

1. Application form
2. Research project
3. Recommendation letter
4. Transcripts and offprints of publications
5. Official proof of language proficiency
6. Invitation letter from the host university/institute

Procedure

1. Have the application form ready
2. Approve by dept. / college officers
3. Submit to OIA
4. OIA will notify the admitted applicants by email

Evaluation standards :

1. Research plan, eligible for executive capability, language ability, research capability of which relevant to supervisors / institutes and the potential skills for research
2. Applicants' performance records, academic performance, pieces of Publications or other performance



Doctoral Outbound
Scholarship

8. Can International students do part-time jobs or work in Taiwan?

Work Permit

- According to Employment Service Act, international students are allowed to work at most 20 hours/week, except for summer and winter vacation. [Click here](#) to apply the work permit online.
- To work in Taiwan after graduating, it is required to be employed first, then the employer can help to apply the work permit.

Career Counseling

- [OIA website](#) provides the regulations and information of foreigners working in Taiwan.
- OIA also holds corporates visiting irregularly, and update latest job vacancies on website.



Working in
Taiwan

Working in Taiwan

International students should have at least Bachelor degree in Taiwan, and employment permits will be distributed who score above 70 points.

Oia can help

If you have any questions about the above information, please feel free to contact:

**Office of International Affairs,
National Chung Hsing University
No. 145 Xingda Rd., South Dist.,
Taichung City 402, Taiwan (R.O.C.)
+886-4-22840206
oia@nchu.edu.tw**

